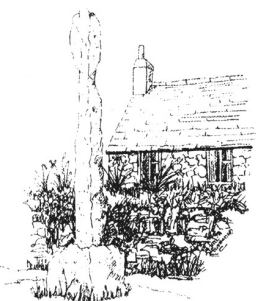
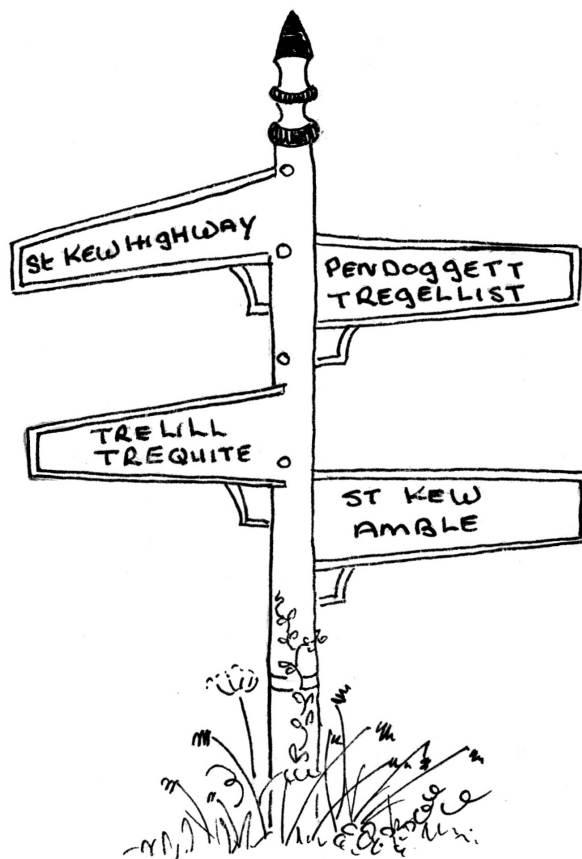


St Kew Parish Plan 2009



© St Kew Parish Council



PART I - Plan

This Parish Plan has been supported by Defra funding through the Local Area Agreement process; and by funding from North Cornwall District Council and St Kew Parish Council

Contents

An Introduction to St Kew in North Cornwall.....	3
How it all started	4
The Questionnaire.....	5
Sections and Questions.....	5
Sections.....	5
Section One – About You.....	5
Section Two – Housing.....	5
Section Three - Transport and Traffic.....	5
Section Four - Community Facilities.....	5
Section Five - Recreation and Leisure.....	5
Section Six - Children and Young People.....	5
Section Seven - Community Safety.....	5
Section Eight - Environment.....	6
Section Nine - Have We Missed Anything?.....	6
Which Questions?.....	6
Hot Topics.....	6
How we did it.....	6
Privacy Policy	6
Taking the plan forward.....	7
And where it's going.....	7
In general - what pleased us	8
In general - what worried us	9
About You.....	10
Who are we – and where do we all live?.....	10
And how old are we?.....	10
Housing.....	11
Traffic and Transport.....	13
The Missing Bus Shelter.....	13
Bus Services for the Parish.....	14
Traffic, traffic and more traffic – not to mention parking.....	15
Community Facilities and Recreation and Leisure.....	16
Parish Council Communications.....	16
Digging for victory – or at least self-sufficiency.....	17
Section 6 - Children and Young People.....	18
Community Safety - Police visibility.....	19
Environment.....	20
How we recycle – and the other side of the coin, or fly-tipping.....	20
Flooding.....	21
Have we missed anything.....	22
Footpaths.....	22
Roads and Pavements.....	22
Action Matrix.....	23
Thankyou!.....	26
Now go to Part II - Data.....	27

An Introduction to St Kew in North Cornwall

The Parish of St. Kew lies in a relatively sheltered area of North Cornwall. Rising land protects its northern and western boundaries from the excesses of the Atlantic gales and its southern boundary is provided by the River Allen, alongside which runs the main A39 road between Wadebridge and Camelford.

The Parish contains a number of scattered villages and hamlets including Chapel Amble (together with Middle and Lower Amble), Pendoggett, St. Kew (Churchtown), St. Kew Highway, Tregellist, Trequite, Trelill, Trewethern and Trewethen (two different places). St. Kew, which gives its name to the Parish, is located approximately centrally and the 15th century Parish Church of St. James and the well-known St. Kew Inn are to be found here, as well as the newly refurbished Parish Hall.

The main centre of population is St. Kew Highway, which grew up around the railway station (gone since 1966) but it is a settlement which has continued to grow over the years. St. Kew Highway is now a fairly self-contained community, with a variety of shops including a supermarket, hairdressers, pasty shop, fish and chip shop, and a garage forecourt selling fuel and other motoring requirements. There is a doctors' surgery (part of the Port Isaac practice) and a car repair/MOT station. The Red Lion public house is situated in the village and serves a large part of the community, being ideally situated in the centre of the village and close to St. Kew Highway Community Hall, which hosts the Methodist Church and is much used by other groups in the community. St. Kew Highway also has a guest house and camping and caravan site at Lanarth, situated just across the A39, and the St. Kew Golf Course, a 9-hole course and adjacent farm shop situated a short distance along the A39 towards Wadebridge.

Chapel Amble is a village within St. Kew Parish and although being of a fair size, has a high proportion of holiday and second homes. Chapel Amble was subject to a restoration project a few years ago and this has added to the attraction of the village in which is situated the popular Maltsters Arms Public House.

The other settlement of any size, Pendoggett, lies on the B3314, which runs from Wadebridge through St. Endellion, then Pendoggett and Delabole before joining the A39 to the north of Camelford. The B3314 is the nearest to a coast road there is in these parts and carries a fair amount of traffic, as it is the major point of access to many of the coastal settlements, including Rock, Polzeath, New Polzeath, Port Isaac, Boscastle and Tintagel. Pendoggett is typical of the ribbon development which occurs along such roads and is therefore subject to a great deal of noise, disruption and danger due to this traffic. The safety issue was exacerbated some years ago when the road was widened to cope with the traffic and it was made even worse, due to the lack of a pedestrian footway. The Parish's fourth public House, the Cornish Arms, is located in the centre of Pendoggett and provides guest accommodation.

St. Kew is geographically a large parish, still very largely agricultural, having a plentiful supply of Grade 2 land which has a variety of uses, including dairy, beef, sheep and arable. There is a pig farm at Treburgett, (just over boundary in St Teath Parish). The population is of low density, being only 0.33 people per hectare, compared with the North Cornwall average of 0.67 (source NCDC). There are approximately 450 households, with more than a few 75 holiday or second homes included (source NCDC).

There are a few small businesses in the Parish but these are by no means widespread and are mostly confined to the tourism industry, often as a result of farm diversification, a large number of redundant farm buildings having been converted to self-catering accommodation.

In character and largely due to its widespread communities, St. Kew Parish is a fragmented one in many respects and is not without some "parochial differences", something which the Parish Council hoped to address through this Parish Plan.

How it all started

Towards the end of 2007, the Parish Council was discussing different concerns within the parish and very much wanted to set these concerns in some sort of formal plan – a sort of list of priorities which would assist them in the future. Following some suggestions from parishioners who very much wanted to have a parish plan, it was decided to go ahead.

One or two neighbouring parishes had already taken an in-depth look at their own needs and concerns and had been able to access funding from various bodies to produce a plan. So St. Kew Parish Council approached North Cornwall District Council and the Cornwall Rural Community Council to find out whether sufficient monies could be found to finance a similar operation in our own parish.

At the beginning of 2008, a formal bid was produced and submitted to the two bodies and at the end of February of that year, St. Kew was granted sufficient funds to produce and distribute a questionnaire to all residents, to set up and run two information sessions when all data had been received and to produce and distribute the final plan. A small leaflet would also be produced, giving brief details on the information contained within the plan, and this in turn would be distributed to all households in the parish.

During the months which followed, the Parish Plan Committee consulted all bodies, organisations, institutes and groups within the parish, asking them what topics they would like to see covered in the questionnaire and specifically which questions they felt would be necessary to elicit information vital to the future of the community.

With the help of all these interested bodies, a questionnaire was finally compiled and printed and in October 2008, it was distributed by hand, with the help of dedicated volunteers, to every household in the community. The same volunteers collected the completed questionnaires some ten days later and with the help of Chapel Amble Post Office and Shop and Aunt Avice's Pasty Shop, we were also able to catch all those who might have missed us when we called.

It was a highly satisfactory response and we were delighted that so many people took the time and effort to complete their questionnaire. We had distributed some 450 documents and in the end received 243 back. Considering that some 75 houses in our community are holiday or second homes, this is a truly great response and ensures that any plans we make for the future will have a really firm base.

We were also delighted that the plan was being worked on and produced to be ready in time to help shape and influence the policies and plans of the new Cornwall Council. This was formed on April 1st 2009 and replaced the existing districts - in our case, North Cornwall District Council (NCDC) and Cornwall County Council (CCC) with a single unitary authority.

On the previous page you will have read an introduction to the parish itself, and on following pages there are some interesting facts and statistics on where we live, how old we are and how we get about. And the bulk of this document will detail the main concerns of our residents, together with an indication of what action can be taken.

The Questionnaire

Sections and Questions

After many weeks of research, consultation and looking at other parishes' plans, we arrived at a list of major headings which we felt we needed to address. These headings became "sections" in our questionnaire. Within each section were a number of questions, more in some sections than others, and for which we felt we could obtain meaningful answers. Some of the questions contained complementary questions, e.g. Transport and Traffic (methods of transport) and Children and Young People (mode of transport to get to school) which can be cross referenced.

Sections

Section One – About You

This asked some basic details, such as where people lived and how many people in each household fell into particular age groups.

Section Two – Housing

What sort of housing people lived in, their tenure, and most importantly, their views on future housing needs in the parish.

Section Three - Transport and Traffic

This section covered a wide range of issues, from public transport, through road safety, parking and the type and numbers of vehicles and the use to which they were put.

Section Four - Community Facilities

Community Facilities covered a very wide range of facilities from local shops and services, through religious establishments, medical facilities, post offices, special residents' needs and volunteer services and beyond.

Section Five - Recreation and Leisure

Section five sought to find out which aspects of recreation and leisure were being used, what people felt about them and to find out what recreation facilities people wanted and which may not have been available at present within the parish.

Section Six - Children and Young People

Children and Young People was designed to assess satisfaction with the education and leisure facilities available to our younger people and to know where they were being educated, how they felt about the school, pre-school, secondary school and what mode of travel was used.

Section Seven - Community Safety

This section addresses crime, the effectiveness and visibility of our local police and Neighbourhood Watch.

Section Eight - Environment

We wanted to find out what people's opinions were and how much they practised recycling, composting, the provision of litter and dog bins and methods and fuels used to heat homes. We also wanted to know how the parish's public footpaths, pavements, roads and areas of flooding were viewed.

Section Nine - Have We Missed Anything?

We knew that we would probably miss some areas and this section was put in to let people tell us exactly which areas and specific questions we missed, for follow up later.

Which Questions?

We asked questions only when we felt that the answers would be able to be used to make a difference or where a result could be obtained. We did discard many questions which, although interesting, would not result in any tangible actions or benefits.

Hot Topics

We did include some questions which we knew were hot topics, e.g. and notably, in the Transport and Traffic area where there were major concerns over road safety.

How we did it

The questionnaire was produced using a word processing package and, after much consultation and many reviews, printed by a local printer, in booklet form, stapled A4 size and designed for easy folding.

The questionnaires were distributed, by hand, by Parish Councillors and volunteers and picked up by hand some ten days later.

The answers were then transcribed onto a database, which was then used to collate all the answers and will continue to be used for ongoing analysis.

Privacy Policy

From the outset, we knew that we had to guarantee anonymity for all respondents so any "personalisation" details on any questionnaires were destroyed, as it was vital that people felt they could trust the process. There was a fill-in form on the questionnaire which asked for volunteers' details. These details were noted before the forms were destroyed. These details have been stored in isolation to the information on the database, which contains no personal details whatsoever. Even though some people still had some privacy worries (see below), they did fill in and return their questionnaires.

Respondents' views on confidentiality

"What degree of confidentiality is being exercised i.e. I do not want my details given to anyone without my express consent!!"

I found some of this pretty intrusive and distrust data being collected. Otherwise the parish is very diverse and it is impossible to have a solution that suits all. St Kew Highway is dominant by population but its requirements are totally different

Taking the plan forward

There are a number of outcomes from this plan and not all of them are applicable today, as the Parish Plan will continue to evolve over the next few years. We will use the information in our negotiations with other bodies, both within the parish and the county.

Action Plans, Categories and “Doability”

All actions identified will fall into one of the following categories:

1) Green - We can take action locally and achieve a result.



2) Amber - We can take some action locally but are reliant on outside bodies and will pursue with them.



3) Red - It is unlikely that we will be able to influence this item directly, but we will pass on to the relevant bodies and monitor the situation. Includes items for information only.



On the following pages can be found some key areas, some general points (“what pleased us” and “what worried us”) and some section specific items and actions. If no actions are planned or possible, that does not mean that the area will be forgotten, merely that we will continue to monitor it.

Following these pages is an “Action Matrix” which is intended to cluster all actions together in one place, with areas of responsibility.

And where it’s going.....

With the effective removal of one tier of local government (NCDC) and the reduction in the numbers of councillors across Cornwall, it will fall to the local parish and town councils to represent the views of local people as never before.

The parish plan will provide St Kew Parish Council with invaluable evidence to back up that representation in dealings and negotiations with the new Cornwall Councillors and Community Network Area representatives.

Recent discussions with Cornwall Council representatives have been very encouraging in their desire to see our parish plan and we shall ensure that we work closely with them to resolve all the issues raised in the plan.

A good example of this cooperation is the introduction of the Highways Stewardship Trial in the Wadebridge and Padstow Community Network Area. St Kew Parish is part of this area and will use the information gathered in the parish plan to feed into the process. This is a very good example of how the parish plan will enable the parish’s views to be better represented.

In general - what pleased us

A lot of positive comments came out of the survey.

We were particularly proud of our surgery at Highway, run by the Port Isaac Practice. 75% of all respondents were satisfied or very satisfied, with almost the same number expressing satisfaction with the pharmacy run there.

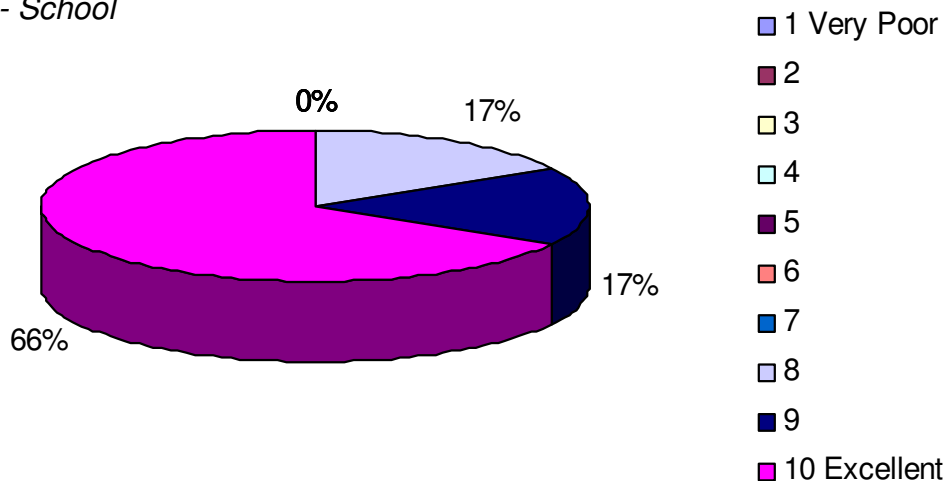
Nearly all respondents were satisfied or very satisfied with the post office counter in the Costcutter Store at Highway, with only 1.5% expressing dissatisfaction. With approximately 75% of respondents using the post office on a regular basis, this is clearly a positive outcome. (Amongst individual comments, it became clear that St. Kew residents would suffer badly if they were to lose either the post office counter at Highway or the one in the Chapel Amble Post Office and Shop.)

The petrol station, too, received nearly 85% satisfaction rate and was used on a regular basis by a very high total of the community – over 90%.

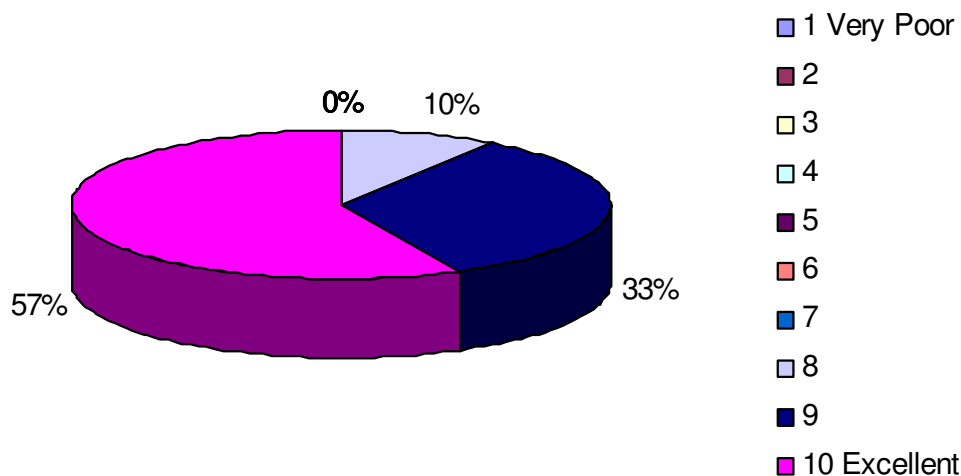
The Parish Magazine was well-received by respondents to the questionnaire, with nearly 90% of respondents saying they were satisfied or very satisfied. And the encouraging thing for the editors is that nearly 100% of all respondents told us they read the newsletter frequently or very frequently.

And our schools came in for high praise, both the Pre-School and St. Kew Community Primary School. (see figs. below)

Satisfaction with St Kew Pre- School



Satisfaction with St Kew CP School



In general - what worried us

As we expected, a great many worries and concerns came out of this detailed look at St. Kew Parish and we shall be looking into these in the pages which follow. In each case, we give some detail on the individual problem or concern, showing how and why it arose, followed by an action plan for the Parish Council.

The main concerns, and not necessarily in order of importance, were as follows:

1. Provision of a bus-shelter, preferably on the original site at Highway
2. A proper bus service with regular time-tables
3. Monitoring of traffic at Highway, with special attention to the junction of Trelill Road, Allen Park and Trequite Lane
4. Monitoring of traffic leaving the A 39 on the slip-road towards the Services
5. Monitoring of traffic at the Ziglag Chapel junction
6. Parking at the Highway end of the Trelill Road, especially outside the Chip Shop
7. Provision of allotments within the Parish
8. Flooding at various places throughout the Parish, with special emphasis on the area under the old railway bridge at Highway and on the slip-road leading from the A39 towards the Services, but short-listing all main areas
9. Fly-tipping throughout the Parish
10. Greater coverage in the Parish Newsletter, Parish Council notice boards and website of Parish Council activities
11. Greater visibility of the Police in the Parish, to include surgeries, provision of informative posters etc. Greater awareness of Neighbourhood Watch.

It is clear that five or six of the matters which attracted most attention come under the heading of "traffic and transport" - around 120 concerns were raised in this area. While it is true that the Parish Council does not possess the powers of, say, Cornwall Council Highways to monitor traffic flow in dangerous areas or change junctions within the Parish, nevertheless the information provided from these questionnaires will prove invaluable when urging local and county-wide bodies to undertake works within our boundaries and should lend weight to our arguments.

Residents' views on Road Safety

"Chapel Amble - no speed limit and no walkways area. Cars parked on the road"

"At Red Lion Junction - difficult vision and speeding from Trelill direction. At same junction. Also U turns at same junction. Road markings on slip road on A39 travelling east"

"Coming from St Kew Churchtown up to Ziglag Chapel T junction - a lot of accidents have occurred there don't like turning right to Wadebridge."

"Pub Hill, cars drive too fast and without caution. Many minor collisions each year. Trewethen to Amble cross roads - visibility very poor"

"Hendra lane is a race track for cars and tractors drive too fast and cannot stop hence always broken lights in the road"

"Many stretches are extremely narrow lanes with long blind bends, large vehicles go much too fast and occupy most of the road and are therefore impossible to avoid"

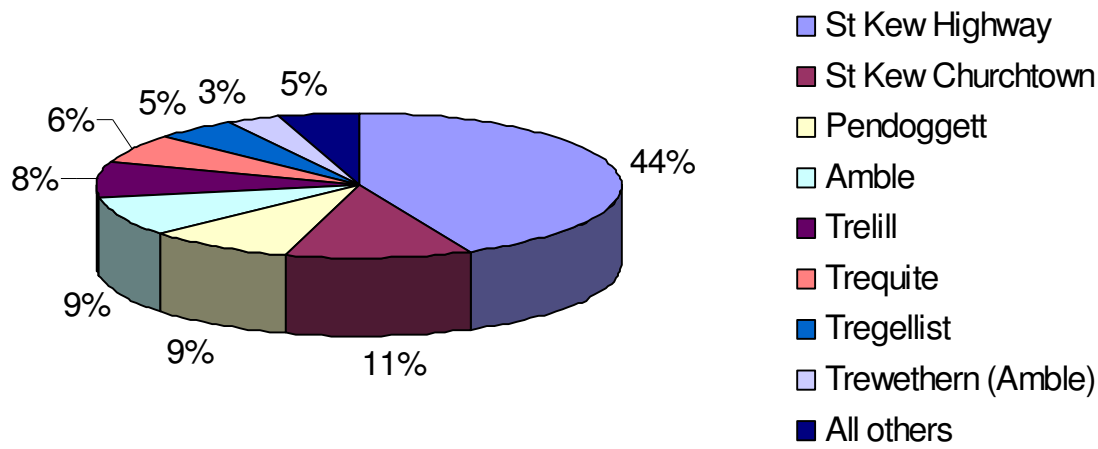
"Pendoggett one way lane still ignored by a number of drivers and there is no enforcement. One day there will be a bad accident at the junction with the B3314"

About You

Who are we – and where do we all live?

It came as no surprise to find that nearly half of all residents live in or around St. Kew Highway (43.28%), with the next largest communities being St. Kew Churchtown (11.34%) and Pendoggett (9.24%).

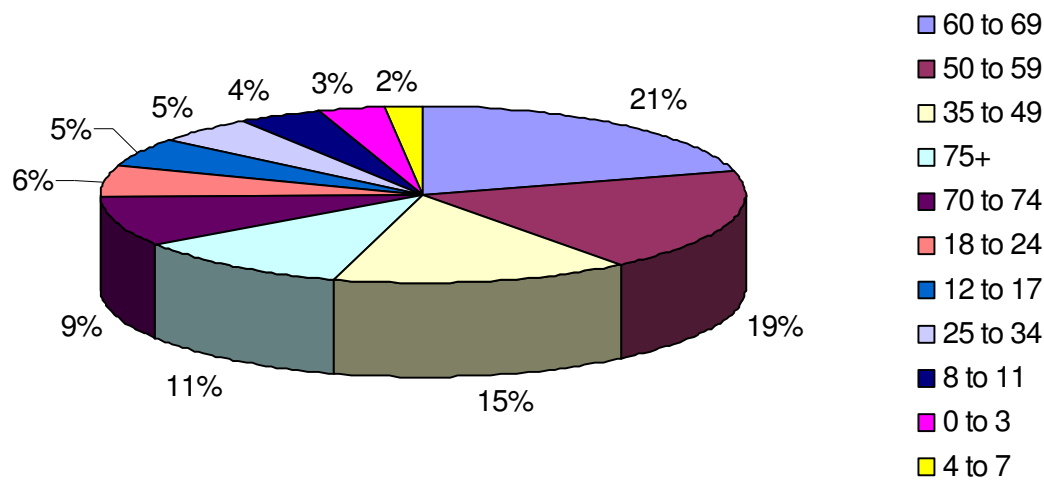
Where we live



And how old are we?

The thing that did surprise us was our age! By far the highest band was between the ages of 60 and 69 (20.44%) with 50 to 59 not far behind on 19.03% . If you add the 8.74% who are 70 to 74 and the 11.23% who are 75+, that makes a total of nearly 60% of all respondents over 50! Those who replied to the questionnaire gave us a total of 95 children under the age of 17 – or just 15% of the overall population. Now it may be that several families with children didn't fill in the questionnaire but it certainly doesn't give a picture of a young, vibrant, thrusting community! (see figure below)

Our Age



Housing

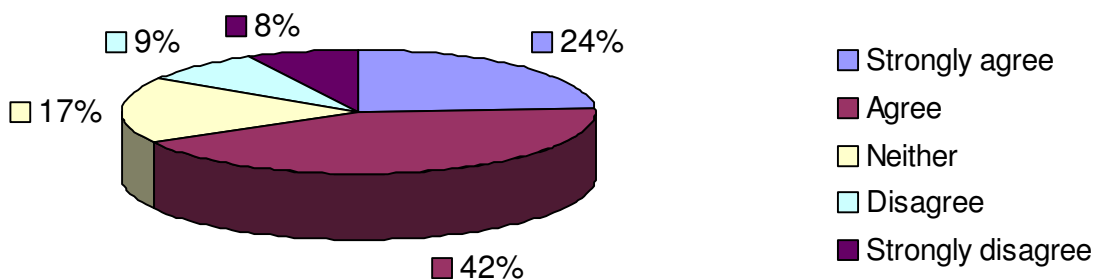
We suspected that the issue of local housing would probably bring out some fairly polarised views and we were right. We asked a variety of questions from availability of affordable housing for local people, through the occasionally thorny issue of second / holiday homes, to where and what development should be allowed in the parish.

We asked about tenure and found that over 81% of the respondents lived in owner occupied accommodation.

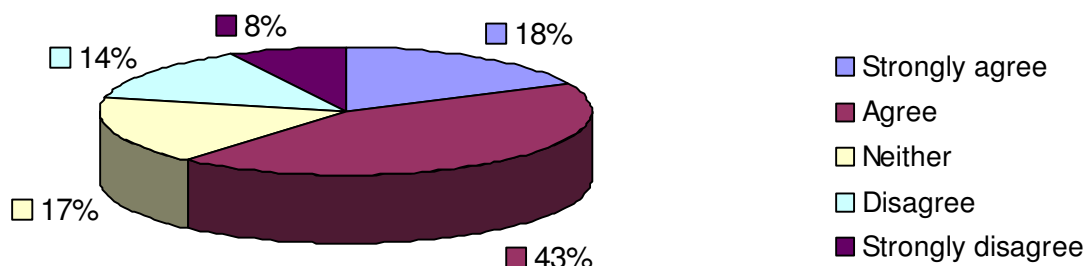
We asked about the need for more accommodation in the parish, firstly whether there should be more open market housing, either for purchase or rent. There were no strong opinions on this area, with most people feeling ambivalent.

However, when we asked the same questions with regard to affordable housing, the results were fairly polarised, with 76% being either in favour or strongly in favour of more affordable housing for purchase, and 61% for more affordable housing for rent.

Should there be more Affordable Housing for Purchase

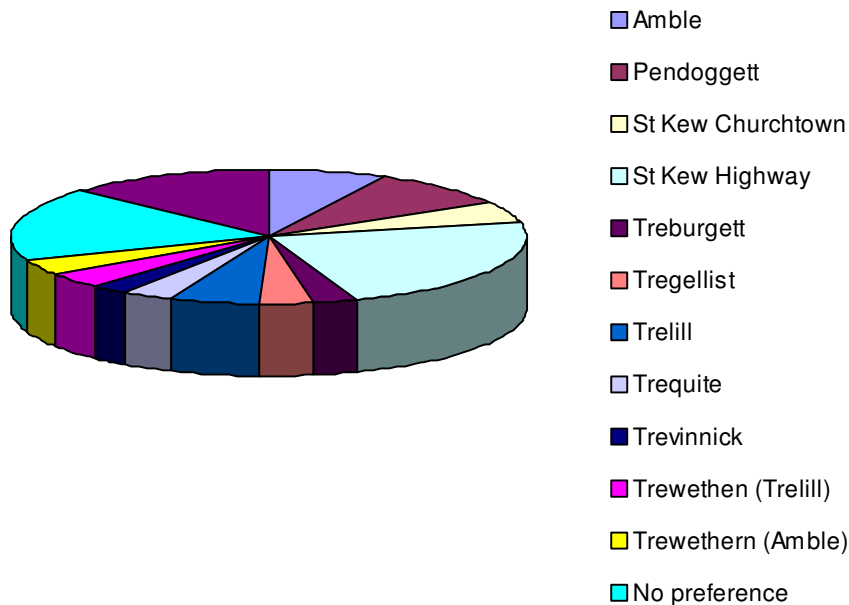


Should there be more Affordable Housing for Rent



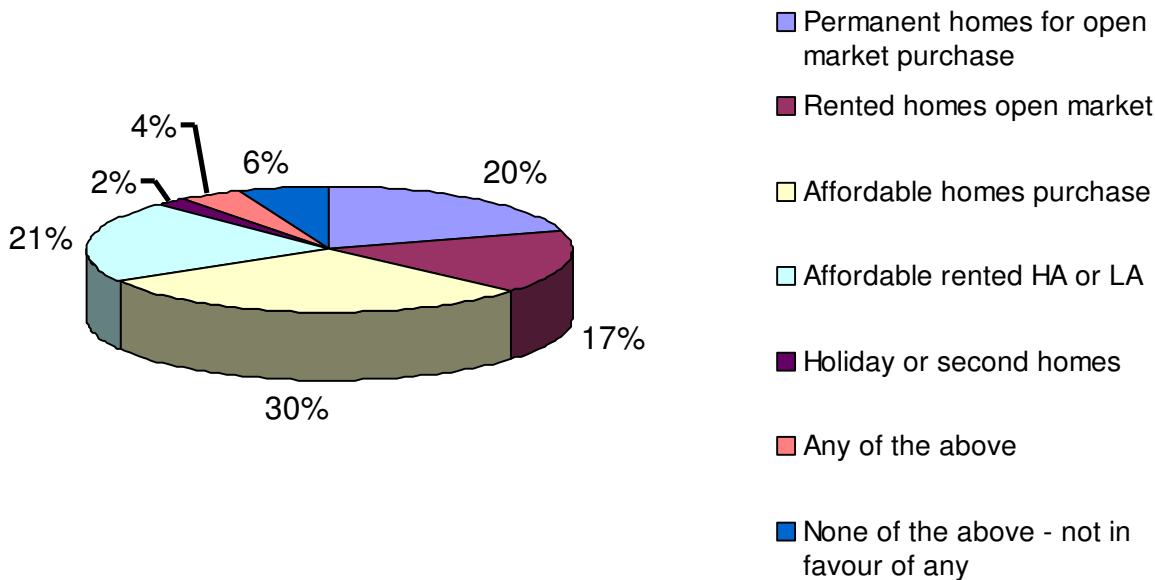
We asked where any development in the parish should take place and while a substantial minority (22%) felt that there should be no extra development, over 37% felt that it should be in St Kew Highway, with nearly 30% having no preference.

Where in the parish should any new housing developments be carried out



We asked also about the number of respondents who are second / holiday home owners, (fewer than 2% of respondents were, which is, by definition, not too surprising), as well as local residents' views on second / holiday homes. When asked whether the parish was in need of more second / holiday homes, over 66% strongly disagreed and over 27% disagreed and over 76% felt that there should be restricted or controlled in some way. We also asked whether people were In favour of converting unused farm buildings and for which uses.

In favour of converting unused farm buildings for which uses



Action	
<i>The Parish Council will collate all housing related information and present to Cornwall Council. It will also be used in helping to decide on planning applications and planning strategies in consultation with other bodies.</i>	
Part of St Kew Parish Housing Plan	

Traffic and Transport

The Missing Bus Shelter

Nearly all residents, throughout the Parish, commented on the lack of a bus shelter.

Up until a few years ago there had been a shelter set against the bungalow, almost opposite the fish and chip shop. This had fallen into disrepair and was subsequently dismantled, due to its dangerous state.

At present, schoolchildren waiting for the bus to take them into Wadebridge School shelter from the elements under the awning over the chip shop – not ideal for them or for the shop. Those waiting for the regular bus service into town and beyond have to wait on the pavement on the corner by St. Kew Surgery – or run the risk of not being seen by the bus-driver. A bus shelter in a prominent place would have the dual advantage of providing protection from wind and rain and also giving a home to more detailed information on services running from and through St. Kew. And of course it would be obvious to bus-drivers that this is a recognised bus-stop, so there would be less likelihood of the bus driving blithely by and ignoring potential passengers.

Just about all respondents to the questionnaire had an opinion on the bus shelter, with 72% supporting proposals for a replacement and 27% against. Overwhelmingly, they ask for it to be sited “where it used to be”, with various qualifying comments, such as “as close to garage and shops as possible, to deter vandalism”, “so children can congregate safely” and “to enable passengers to be seen by drivers”. One respondent did write “Is there a bus?”! but on the whole, the large majority want our bus shelter back – and where it was.

Site of old bus shelter



Action	
As part of the St Kew Parish Traffic and Transport Plan, and in partnership with Cornwall Council Highways , bus companies and Police, the Parish Council will look into the provision of a new shelter as a matter of urgency. This will depend on location etc and funding being available and will need to be part of an overall plan for the area.	
Part of: St Kew Parish Traffic and Transport Plan	

Bus Services for the Parish

Following on the from the concerns about the missing bus shelter, it is clear that residents are not happy with the provision, or lack of provision, of regular bus services for the Parish.

When asked to rate the regular bus service, a large number of respondents filled in the “don’t know” slot. But sadly, of those who knew and used the service, far more rated it poor or very poor, for the suitability of the route(s), the adequacy of the timetable and the price of fares.

When Corlink is mentioned, again nearly 80% filled in the “don’t know” section, and those who did use it again rated it poorly.

From the many comments written on this subject, it became clear that a great many people were depending on their own motor vehicle or lifts from friends and neighbours, simply because the existing service was perceived to be inadequate. Many residents wished for a more wide-spread service, bearing in mind that the “official” stop at Highway could be as much as two or three miles from their home village. Trelill, Pendoggett, Churchtown were all mentioned as possible routes, with other respondents citing the almost impossibility of getting from Pendoggett to Bodmin Parkway station.

In all it was clear that residents would like to see an improved service, covering more parts of the Parish, with more frequent buses into Wadebridge and above all, clear timetables on show, which in turn could be visibly displayed within a new bus shelter.

Together with improved services, we need to provide the bus companies with safe set down and pick up points. Bus drivers currently experience problems, especially at peak times when traffic and parking can cause great difficulty - see below.

No room for the bus



Local bus service - a rare sight in the lanes



Action	
As part of the St Kew Parish Traffic and Transport Plan, the Parish Council will enter into discussions with the different bus companies to investigate existing services and to explore new extensions to routes and the establishment of a more frequent service into our nearest town. Cornwall Council's help will be enlisted where necessary. We will also open discussions with the bus companies and Cornwall Council on the best way to ensure safe and reliable passenger set down and pick up in all places where buses stop.	
Part of: St Kew Parish Traffic and Transport Plan	

Traffic, traffic and more traffic – not to mention parking

The Trelill Road, with the junctions with Whitehall Estate and at the Red Lion was highlighted over and over again. People also worried about the haphazard parking outside the fish and chip shop, with drivers performing dangerous U-turns in the junction with Allen Park. The roadway outside the Playing Fields was also a worry, especially at weekends, when the fields are being used for practice games and matches and the road is used as an *ad hoc* parking lot.

A good many people worried about the junction from the St. Kew Service Station onto the A 39 road, where we all know of accidents and near-accidents. And the slip-way from the A 39 coming from Wadebridge towards the Service Station came in for a lot of criticism, too, with many drivers not observing the 30 sign and the markings at the side of the slip-road non-existent. In total, 67 residents had specific worries about this part of our road-system.

The junction with the A 39 and Chapel Lane at Ziglag Chapel also attracted a great deal of criticism and here, too, there have been several major incidents in the last three years alone.

The B 3314 at Pendoggett, at the exit from the Cornish Arms, worried many people, as this main highway from Delabole to Wadebridge, feeding side-routes to Port Isaac, Polzeath and Rock, is the main road for domestic as well as HGV traffic and many residents perceive the route to need some form of calming.

Pub Hill, at St. Kew Churchtown, with its narrow granite sides and overhanging trees also came in for comment, and throughout the Parish, excessive speed through the lanes was mentioned as a major concern.

Busy junction with A39 at St Kew Highway



No passing place at Pub Hill, St Kew



Action

The Parish Council will work together with Cornwall Council Highways to establish a list of priorities for roads in the Parish. While not wishing to burden drivers with a whole new swathe of “traffic calming” measures, it is clear that some parts of the local road network are crying out for a fresh look at individual problems, as for example, the painting of white lines along the entry to the slip-road from the A 39.

Community Facilities and Recreation and Leisure

A subject which covers topics as diverse as going to church, using the shops, updating the Parish website and attending keep-fit classes, it clearly exercised a great many residents.

Although several respondents added comments, such as “I think we have a lovely community – can’t think of anything else I would need”, others did feel the lack of activities for teenagers, a tennis court, more parks and open-spaces for public use and of course – the urgent need for a youth club. One of our number would like to see Christmas lights and the return of the mobile banking service, once provided so efficiently by HSBC, would be a boon to the community.

In the short-term, it was felt that additional classes could be organised in both the community halls, while medium-term aims could be the provision of a tennis court, changing facilities and of course the provision of allotments (see separate item).

Action	
<i>The Parish Council will work and negotiate with other bodies on the possible provision of other Community and Recreation and Leisure facilities</i>	
Part of Recreation and Leisure	

Parish Council Communications

It was clear that the Parish Council could improve their communications with the Parish, via the Parish Council website, notice boards and in the parish magazine. The website in particular, is in need of a total revamp, with particular attention paid to accuracy and currency of information, as well as the raising of public awareness. Some people wanted more information and details of the discussions at parish council meetings. It was also clear that the whole area of access to the web, availability of computer equipment and the lack of computer literacy should be addressed. Information on footpaths and walks in the parish was needed too.

Action	
<i>The Parish Council will carry out a complete review and revamp of the Parish Council website and relaunch with necessary publicity. The Parish Council will also look for ways of improving communications via the parish magazine. Improve communications to inform residents and to encourage interest in the work of the Parish Council.</i>	
Part of Parish Council Communications, Parish Facilities, Recreation and Leisure	

Action	
<i>The Parish Council will conduct further investigations into the availability of computer equipment and web access., as well as lack of computer literacy.</i>	
Part of Parish Council Communications, Parish Facilities, Recreation and Leisure	

Action	
<i>The Parish Council will distribute the findings of the parish questionnaire to local Businesses and Organisations on an individual basis. Further analysis may be performed when assessing the need for future local services and facilities in the parish.</i>	
Part of Parish Facilities, Recreation and Leisure	

Action	
<i>The Parish Council will resurrect the plan for a Parish Map and information about footpaths in the area.</i>	
Part of Community Facilities, Recreation and Leisure	

Digging for victory – or at least self-sufficiency

What with the nation as a whole becoming more conscious of the need to watch household spending, together with such august bodies as the National Trust backing the provision of allotments in many of its grand properties, it is hardly surprising that allotments also featured on the wish-list of many St. Kew residents.

Nearly 50% of all respondents would like to see community gardens/allotments or vegetable plots provided within the Parish and this is an area in which the Council can take positive action.

Further proof of local interest in the topic has been shown through the formation of the Camel Community Supported Agriculture association recently set up behind the Farm Shop at the St. Mabyn / Hendra Lane crossroads on the A 39 and the Council is in touch with the founders.

The Parish Council has already had talks with a local resident who is anxious to put a small meadow to good use. Consultations with neighbouring parishes on this subject have already taken place and it is hoped to announce firm plans by early Summer 2009.

Resident's views on buying and growing food

"A local veggie box scheme - possibly from the farm shop. A community veggie growing scheme/allotments. Basic food for sale in St Kew e.g. milk, bread, cheese etc. From pub/community shop?"

"A good genuine local farm shop selling local produce at sensible prices."



Action

Continue negotiations with local landowner(s), discussions with local parishes, to develop an allotment scheme.

Part of Community Facilities, Recreation and Leisure

Section 6 - Children and Young People

The questionnaire revealed some really good results for our school, pre school and toddler group, as well as some interesting data on where secondary schooling is taking place.

All results will be fed back to the relevant organisations.

Action	
<i>Feed back all results of questionnaire to relevant bodies (pre school, St Kew CP school, secondary schools etc.</i>	
Part of Children and Young People, as well as being connected to Traffic and Transport.	

One of the areas which was mentioned was the lack of facilities for young people, including a youth club.

Action	
<i>Investigate the provision of extra facilities for young people. Work with partners to investigate the restoration of a youth club, to include discussions with Youth Cornwall. Seek volunteers to assist with running of youth club and seek input from young people</i>	
Part of Children and Young People	

Our schools



Community Safety - Police visibility

Respondents were highly critical of the police presence within the Parish, with 35% being dissatisfied or very dissatisfied and 61% telling us they wouldn't know how to contact our community officer or PCSO. One resident even wrote "didn't realise there was a community police officer", while another wrote "have never seen a police officer in the Parish in 3 years".

While it is true that the PCSO attends Parish Council meetings on a regular basis and gives an update on security and crime in the area, there is clearly no substitute for a visible police presence and respondents suggested a regular system of police "surgeries", the provision of posters and the actual appearance of an officer in our community from time to time.

Residents' views on Community Safety

"Cannot comment. Had no knowledge of CPO - PCSO"

"Didn't realise there was a Community Police Officer"

"Have not seen a community police officer in my area in the last 20 years. Yet had serious/petty thieving at times"

"We see very few police but there is probably little need except from speeding cars"

"I am very surprised our Community Police Officer or Support Officer has never introduced themselves in writing or by flyer. Is this something that we have to do?"

"Last Neighbourhood Watch coordinator has left village - don't know of successor"

"We saw the Community Police Officer once at a neighbourhood watch meeting 3-4 years ago and have not seen him since"

"More visits by Police to estate especially during school holidays. School visits and community events"

"It is very low profile"

"Member of Farm watch - notified by police if any problems in the area"

"We should all be aware that we live in a very safe place and help support each other so that it stays that way"

"Why do we need a neighbourhood watch when St Kew Parish has such low crime figures"

Action

Feed back results to local representatives of Devon and Cornwall Police. (The local PCSO has already responded very positively to approaches from the Parish Council and has suggested an action plan to address the issues).

Continue to work with Police to improve Community Safety wherever possible. Involve Police representatives more in Parish Council meetings and foster a long term working relationship. Show community backing for Police. Investigate involvement with Wadebridge PACT (Partners and Community together) scheme, run by Devon and Cornwall Police.

Part of Community Safety

Environment

How we recycle – and the other side of the coin, or fly-tipping

On the whole, the residents of St. Kew are a public-spirited and environmentally friendly community, with 70% of us recycling, 75% of us composting regularly, 64% using a water butt and 70% aware of the different facilities made available to us throughout the area. Interestingly, too, a large number of us have cavity wall insulation, energy-saving light-bulbs, loft insulation and double-glazing so it is clear that the message of saving money while watching over the environment is getting through.

The one area which never fails to anger people, however, is the matter of dog-fouling, which is perceived as a very real menace throughout the Parish. People will accept mud on the road, or most of the “dirt” emanating from farms throughout the Parish, but dog-fouling is seen as a wholly unnecessary evil. Comments make it clear that it is not simply the provision of dog-litter-bins which will solve the problem but rather the “education” of dog owners.

As feared over the past few months, when collection of domestic rubbish has become a hot topic, fly-tipping throughout the Parish is an issue. Respondents complained about “general rubbish” in lanes and hedgerows but also about specific locations, such as the footpath behind Whitehall and Meadowside Close, at Bokelly Bridge and along the Trelill road. It is raised on the subject of footpaths, where walkers encounter plastic bags and worse but also the number of litter-bins provided by the Council is felt to be inadequate.

Fly tipping.



Action	
<i>The Parish Council will monitor the incidence of fly-tipping throughout the Parish and pursue the matter of dog fouling with the authorities., with the possible addition of more dog litter bins. A campaign of public awareness with the aim of raising the profile of this anti social problem will be pursued.</i>	
Part of Environment	

Flooding

Following on from the comments on how we treat our environment, the efforts we make with recycling and composting and our concerns about fly-tipping, we found that a great many residents were worried about flooding and drainage throughout the community.

Some 60% of all respondents had experienced difficulties with flooding in the area and highlighted some parts of the Parish with particular problems. Amble came in for criticism, including Middle and Lower Amble and the road between Churchtown and Pendoggett also worried many respondents. It was clear that the area beneath bridges consistently attracted excess water and many residents also felt that ditches, gullies and hedgerows needed constant attention throughout the Parish. As a part of the problem, potholes were also cited as a cause for concern throughout the Parish and in particular Chapel Lane at Rose-in-Vale, Tipton to Churchtown, Pendoggett to Churchtown and the St. Teath Road, Hendra Lane and Rooke Road at Amble were mentioned over and over again.

It is clear that standards of highway maintenance have fallen over recent years and residents (some 130 of whom wrote specific comments on the problem) are anxious that “someone” should urge the relevant authorities to improve conditions, including the Environment Agency where and when appropriate.

Old road, St Kew Highway, following a rare fine period when it didn't flood!



Action	
The Parish Council will examine the state of roads and lanes throughout the Parish and will produce a specific document, detailing all problems, for submission to Cornwall Highways and the Environment Agency.	
Part of Environment, also Traffic and Transport	

Footpaths

We asked how people felt about maintenance of footpaths in the parish, and, although over 30% were satisfied, over 20% were either dissatisfied or very dissatisfied. Given the reduction in funding by Cornwall County Council (and now Cornwall Council) for footpath maintenance, this will mean that the parish will need to investigate further ways of keeping our footpaths cleared. We also could benefit from an improved method that residents could use to notify the Parish Council of specific problems with footpaths.

Action	
<i>The Parish Council will examine ways of keeping footpaths cut and clear, especially in the light of decreasing funding. They will devise an improved method that residents can use to notify the Parish Council of specific problems with footpaths.</i>	
Part of Environment	

Roads and Pavements

Generally speaking, respondents were not impressed with the maintenance of roads and pavements in the parish, with 46% of respondents saying that they frequently or very frequently encounter problems with potholes.

Action	
<i>The Parish Council will work with Cornwall Council towards a better way of reporting and resolving problems with our roads and pavements.</i>	
Part of Environment	

Have we missed anything

We asked what we had missed (in a questionnaire which already spanned some twenty two pages) and we found a few items!

These covered a variety of subjects, such as the lack of broadband in some areas with 880 numbers, to the lack of footpaths, to the suggestion that we should have asked about people who work at home.

As these items covered such a wide area, we will allocate them to the most appropriate area for further investigation / action where possible. Others we will deal with on a case by case basis.

Action	
<i>The Parish Council will analyse all other issues which have been raised and analyse further or take the appropriate action.</i>	
Part of Have we missed anything	

Did we miss anything? Some residents' suggestions

"Are you satisfied with your IT/ Broadband connection? Do you use the internet? If so how often?"

"Working at Home - Poor or inadequate mobile phone or broadband reception"

"Do you have good mobile reception? Are you involved in tourism within the parish? I.e. B&B/ Restaurant/Holiday lets"

"I don't think so!!"

Action Matrix

All identified actions are detailed below, with overall schemes in the grey areas above

Key

Meaning

Col our

We can take action locally and achieve a result.

We can take some action locally but are reliant on outside bodies and will pursue with them.

It is unlikely that we will be able to influence this item directly, but we will pass on to the relevant bodies and monitor the situation. Includes items for information only.

Housing	St Kew PC / Cornwall Council	
<i>Collate all housing related information and present to Cornwall Council. Also use in helping to decide on planning applications and planning strategies in consultation with other bodies.</i>	St Kew PC	
Transport and Traffic	St Kew PC / Highways / Police / Bus Companies	
<i>Work to formulate draft traffic and transport plan, to include areas below and for presentation to other bodies</i>	St Kew PC	
<i>Road safety - work together with Highways and Police to establish Traffic plan</i>	St Kew PC / Cornwall Council / bus companies / Police	
<i>Bus shelter - investigate feasibility, cost , site etc</i>	St Kew PC	
<i>Bus shelter - integrate in overall plan, negotiate with other bodies on site, funding etc</i>	St Kew PC / Cornwall Council / bus companies / Police	
<i>Bus services - work with bus companies, Cornwall Council and Police to establish plan</i>	St Kew PC / Cornwall Council / bus companies / Police	
Community Facilities, Recreation and Leisure	St Kew PC	
<i>Improve Parish Council Communications including in areas below</i>	St Kew PC	
<i>Parish notice boards - conduct study as to effectiveness, condition, siting etc.</i>	St Kew PC	
<i>Parish Council website - revamp and re launch</i>	St Kew PC	
<i>Carry out further study on the availability of computer equipment and Web access and computer literacy</i>	St Kew PC	
<i>Improve communications in parish magazine - details of all items discussed at council meetings</i>	St Kew PC / Your Parish	
<i>Improve communication to inform residents and to encourage interest in the work of the Parish Council</i>		

Community Facilities, Recreation and Leisure	St Kew PC / Your Parish / others	
<i>Continue negotiations with local landowner(s), discussions with local parishes, to develop an allotment scheme.</i>	St Kew PC	
<i>Work and negotiate with other bodies on the possible provision of other Recreation and Leisure facilities, including IT availability and broadband access in the Community Hall, where the necessary cabling is already in place, photography and language classes, tennis courts and others.</i>	St Kew PC and others	
<i>Coordinate response to place offers of help together with stated needs from questionnaire. Work with Your Parish as communication medium.</i>	St Kew PC / Your Parish	
<i>Resurrect the plan for a Parish Map and information about footpaths in the area.</i>	St Kew PC	
<i>Distribute the findings of the parish questionnaire to local Businesses and Organisations on an individual basis.</i>	St Kew PC	
Environment	St Kew PC / Environment Agency / others	
<i>Raise the general problem and individual instances of dog fouling with the authorities. Look into possible addition of more dog litter bins. Pursue a campaign of public awareness with the aim of raising the profile of this anti social problem .</i>	St Kew PC / Cornwall Council / Environment Agency / others	
<i>Monitor the incidence of fly-tipping throughout the Parish and keep relevant authorities informed.</i>	St Kew PC Cornwall Council / Environment Agency	
<i>Examine the state of roads and lanes throughout the Parish and will produce a specific document, detailing all problems, for submission to Cornwall Highways. And Environment Agency.</i>	St Kew PC	
<i>The Parish Council will examine ways of keeping footpaths cut and clear, especially in the light of decreasing funding. They will devise an improved method that residents can use to notify the Parish Council of specific problems with footpaths.</i>	St Kew Parish Council	
<i>Work with Cornwall Council towards a better way of reporting and resolving problems with our roads and pavements. Cooperate with Cornwall Council Highways on Highways Stewardship Trial.</i>	St Kew PC / Cornwall Council Highways	

Children and Young People	St Kew PC / Others	
<i>Feed back all results of questionnaire to relevant bodies (pre school, St Kew CP school, secondary schools etc.</i>	St Kew PC	
<i>Investigate the provision of extra facilities for young people,. Work with partners to investigate the restoration of a youth club., to include discussions with Youth Cornwall. Seek volunteers to assist with running of youth club and seek input from young people.</i>	St Kew PC / Youth Cornwall / Others	
Community Safety	St Kew PC / Devon and Cornwall Police	
<i>Feed back results to local representatives of Devon and Cornwall Police.</i> <i>(The local PCSO has already responded very positively to approaches from the Parish Council and has suggested an action plan to address the issues).</i>	St Kew PC	
<i>Continue to work with Police to improve Community Safety wherever possible. Involve Police representatives more in Parish Council meetings and foster a long term working relationship. Show community backing for Police.</i>	St Kew PC / Police	
Have We Missed Anything		
<i>Analyse all other issues which have been raised and analyse further or take the appropriate action. Could include extra surveys as necessary.</i>	St Kew PC	

Thankyou!

This Parish Plan has been produced by St. Kew Parish Council as a guide to the needs and aspirations of all residents in the community. It is hoped to use the findings as a guide when future discussions take place on our surroundings and well-being. In addition, the very many useful, helpful and indeed vital findings which emerged can serve as “ammunition” when challenging or questioning or researching local matters.

Without the encouragement and assistance of a great many bodies and individual people, this Parish Plan would not have been possible. In particular, the Council would like to thank:

- North Cornwall District Council and Sally Lewis for funding, advice and input
- Cornwall Rural Community Council and Tracey Edwards for funding, advice and input
- The dedicated Committee who met week in, week out and put in so many hours of devoted work into the project
- The cheerful band of volunteers who distributed questionnaires to each individual household and collected them individually later
- The organisations and individuals who were so helpful in putting the questions in the questionnaire
- Jim Godden for the use of his description of St Kew Parish
- Avice and Peter Gill of Aunt Avice’s Pasty Shop and Shirley and Barry Cuff of the Chapel Amble Post Office and Shop who collected additional questionnaires and handed out spare copies to late respondents
- David Balmford and Fran Finnemore for their photographs and drawings of St. Kew Parish, used to enhance and illustrate the final document
- The administrators of the Parish Hall and the Community Hall for the use of their premises to set up a public exhibition and information sessions
- Quill Printers for their speedy printing and delivery of the questionnaire and of the final document
- *And finally – a special thankyou to the 243 respondents who took the time and effort to fill in and return their questionnaires. Without your input, the Council would never know what pleases you and what concerns you about your community.*

One last plea – Parish Council meetings take place on the second Tuesday of each month, in the Parish Hall in St. Kew Churchtown. Members of the public are urged to attend and find out what is being discussed each month, as it is in your interest! Do come – you will be made very welcome.

Now go to Part II - Data

Part II - Data, is a separate document and contains all questions and the results gathered from the Parish Questionnaire during late 2008 and collated early 2009. It refers to this part - Part I, and the two should be read in conjunction with each other.

The questions are exactly as they appeared in the questionnaire, with the same sections and layout. Some results however, have been brought together in section 4 – Community Facilities, with some results from section 5 – Recreation and Leisure, and section 6 – Children and Young People.

Where possible, we have included all data, but many comments have been excluded, mainly for the sake of brevity, but also for the fact that some of them are of a personal nature.

These comments have been collated and will be distributed to all interested parties on a need to know basis. If any interested party wishes to view any part or parts of the data not listed here, please contact either the St Kew Parish Plan committee or St Kew Parish Council on www.stkewparish.org.uk

Where comments are asked for, or where the answers are in a free text form, these have, in the main, been removed. Many of the comments identify specific locations or individuals and have been removed to protect those individuals.

These comments are available on a “need to know” basis from St Kew Parish Council.

Please ask!

We look forward to hearing from you.

